

LAND CERTIFICATE NO. 35447 COPY

Land Certificate No. 35447 Tulcea

A. Part I. Property description LAND

within the built-up area

Address: Loc. Tulcea, Str BABADAG, Jud. Tulcea, Select Parking

Item no.	Cadastral number Topographic number	Surface* (sqm)	Observations / References
A1	35447	From the documents: 168 Measured: 169	

B. Part II. Owners and documents

Entries regarding property rights and other real rights		References
7561 / 17/02/2012		
Administrative Act no. 284, dated 21/12/2011 issued by the Tulcea Local Council;		
B1	Tabulation, PUBLIC PROPERTY right, acquired by law, current share 1/1, initial share 1/1	A1
1) TULCEA MUNICIPALITY, CIF (Fiscal Identification Code): 4321429, public domain		

C. Part III. ENCUMBRANCES.

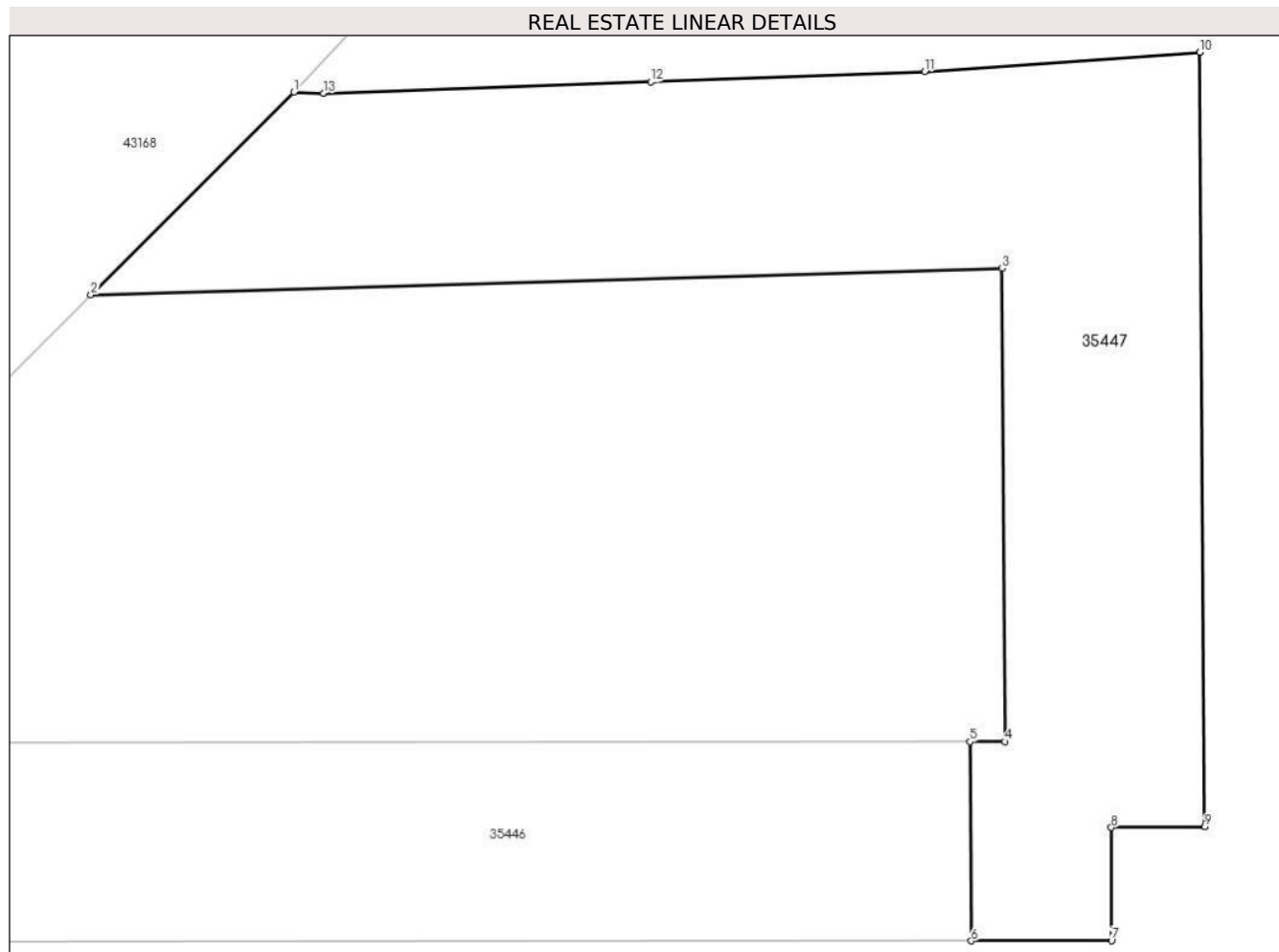
Entries regarding dismemberment of property rights, real rights of guarantee and encumbrances	References
NOT EXISTING	

Annex No. 1 To Part I

Land

Cadastral no.	Surface (sqm)*	Observations / References
35447	From the documents: 168 Measured: 169	

* The surface is determined in the Stereo 70 projection plane.



Land related data

Item no.	Usage category	Land within the built-up area	Surface (sqm)	Strip land	Lot	Topographical no.	Observations / References
1	construction yards	YES	169	-	-	-	

Segments length

1) The segment length values are obtained from the plan projection.

Start point	End point	Segment length (** (m)
1	2	6,483
2	3	20,584
3	4	10,697
4	5	0,783
5	6	4.5
6	7	3,167

Start point	End point	Segment length (** (m)
7	8	2,558
8	9	2,103
9	10	17,503
10	11	6,228
11	12	6,187
12	13	7,403
13	1	0,664

** Segment lengths are determined in the Stereo 70 projection plane and are rounded to 1 millimeter.

*** The distance between the points is made up of cumulative segments that are smaller than the value of 1 millimeter.